

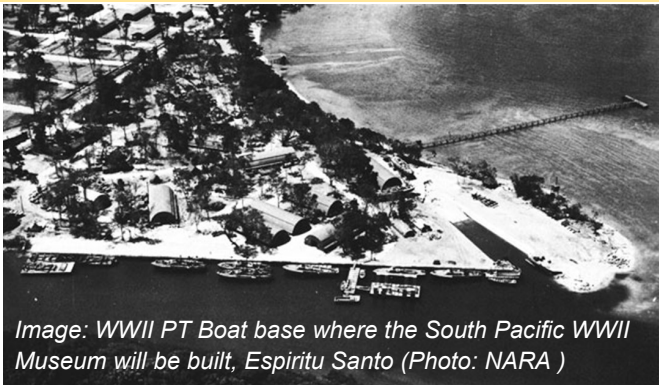


**SOUTH PACIFIC WWII MUSEUM**



**Volume 02. Number 01**

**January 2017**



*Image: WWII PT Boat base where the South Pacific WWII Museum will be built, Espiritu Santo (Photo: NARA )*

**A Happy New Year to all our members, relatives, friends, supporters and followers.**

We believe that you've had a good holiday season filled with good memories. In this first 2017 edition, we provide you a brief of what we aim to achieve this year, the museum's planned location and updates of our works following on from the last edition.

We are grateful of the support from our good friend James Carter of [Broken Wings](#) who is assisting us with the development of the museum's website. We've had our website landing page recently launched while the website is being fully developed. James has also supported the museum works in the past through the production of the museum's promotional video. Those who have not seen it may do so [here](#) .

After the [museum site lease signing](#) with the Lord Mayor of Luganville Municipality and the Minister of Lands representing the Government of Vanuatu on the 20th of May 2016, we are pleased to announce that the 7300 square-meters of land lease was finally registered under the Elwood J Euart Association as of the 12th of December 2016. We

are grateful for the support and cooperation from respective Government authorities, particularly from the ministry of lands, who have assisted us through this important process.

What makes the museum site unique, is that it will be located on a WWII historical site. The site where the museum is to be constructed is used to be the Patrol Torpedo (PT) Boat base during WWII. A concrete slab remaining from the surrounding buildings at the PT Boat base still remains today, which will be preserved and used to form part of the Museum's concrete base when constructed.

From the top left image, there are visible PT Boats on the waterway along the Sarakata river. Upon completion of the museum, the Sarakata river remains accessible where today there are visible relics of what used to construct the waterway during WWII.

Patrol Torpedo Boat, or in short PT Boat, is a torpedo-armed fast attack craft used by the US navy in WWII.

*Image: A type of PT Boat used during WWII (Photo: Pinterest)*



 **PayPal** Help us build the South Pacific WWII Museum  
 Online donations to [Elwood J Euart Association](#) Paypal account

Image: Google earth location of the South Pacific WWII Museum site, Espiritu Santo

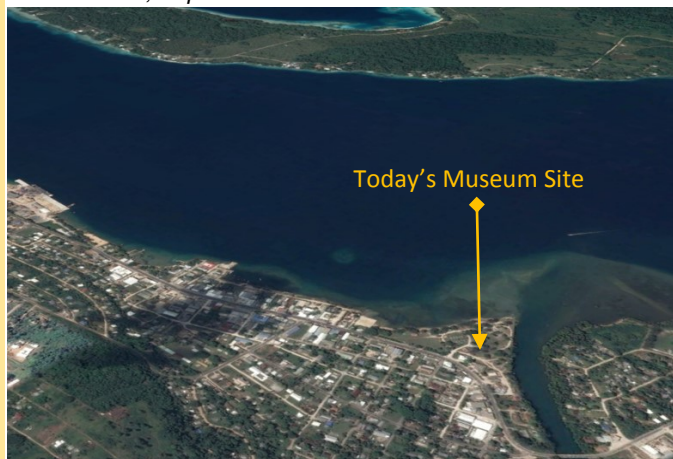
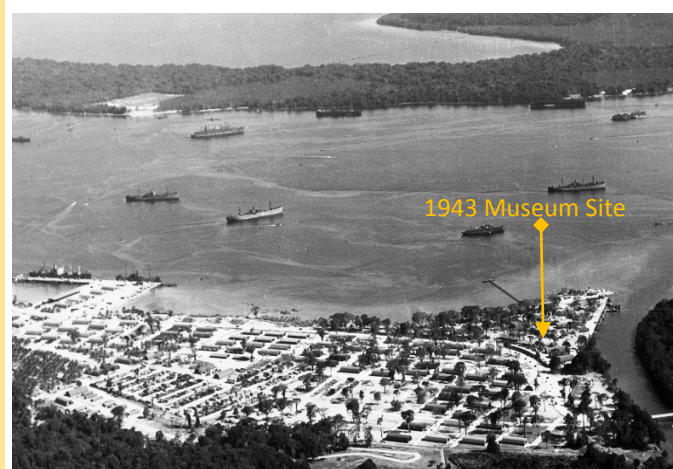


Image below: Corresponding Museum site on an old WWII photo. (Background) Warships at Segond Channel



Having achieved an important milestone, of acquiring a registered land title for the museum development, we are now working towards a mass-media launch of our fundraising campaign.

Part of preparatory works towards this launching will involve development of the museum's website, a business and strategic plan, and a marketing & fundraising plan.

While we focus on achieving our strategic goals and plans this year, we also aim to keep the general public, our stakeholders and partners regularly informed of the museum developments as well as educating our youth and interested followers and supporters about the historical significance of Espiritu Santo during WWII, particularly relating to the Pacific Theatre, through social media and our monthly newsletters.

As part of our efforts towards increasing public awareness and fundraising, we will be developing two mini pop-up museums in Espiritu Santo. One is located at the [Espiritu Hotel](#), at the center of Luganville town, and another is to be located at the [Pekoa International Airport](#). Pekoa was first constructed during WWII as one of the three Bomber airbases on the island, that remains the only one still in use today.

These mini museums provide a glimpse of what the museum aims to offer when completed, and to also support our fundraising efforts.



Image above: Display shelves at the Espiritu Hotel

Image below: Wall Poster & donation box at the Espiritu Hotel



*"We aim to inspire all to understand the sacrifice and achievement of others in defending freedom for all"*

For more information, donation and pledges of support  
**CONTACT: Elwood J Ewart Association**  
**Email: [info@southpacificwwiimuseum.com](mailto:info@southpacificwwiimuseum.com)**  
**Website: [www.southpacificwwiimuseum.com](http://www.southpacificwwiimuseum.com)**  
**Phone: (678) 36 227 Fax: (678) 36 829**  
**PO Box 850 Luganville Espiritu Santo Vanuatu**